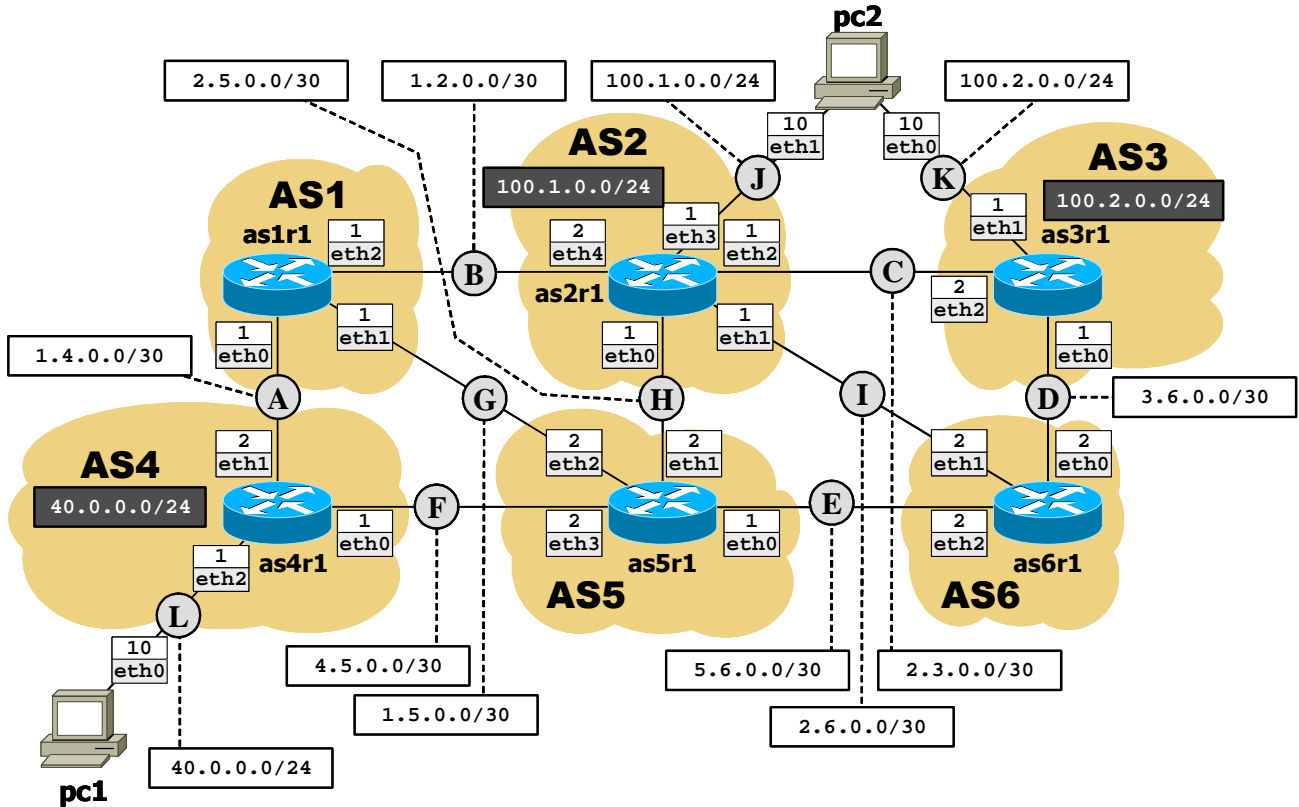


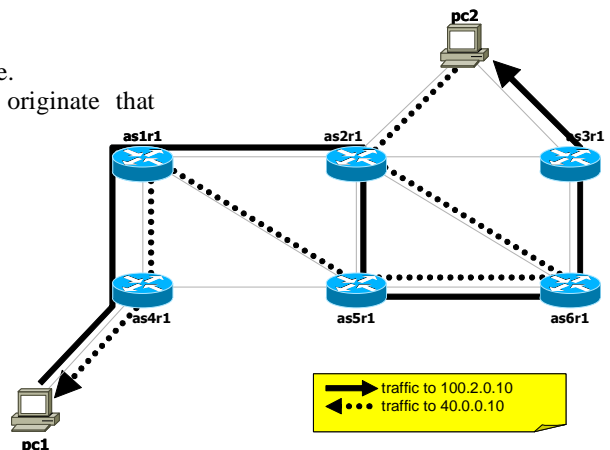


Available time: 100 minutes.

Using Netkit, implement the network depicted in the following figure.



- All the specified IP addresses must be reachable from any network node.
- Autonomous Systems that have a dark grey network associated originate that network.
- Routers do not apply any filters nor announce the default route 0/0.
- By **only setting local-preference**, implement suitable BGP policies that direct traffic flows between **pc1** and **pc2** as indicated in the picture on the right.

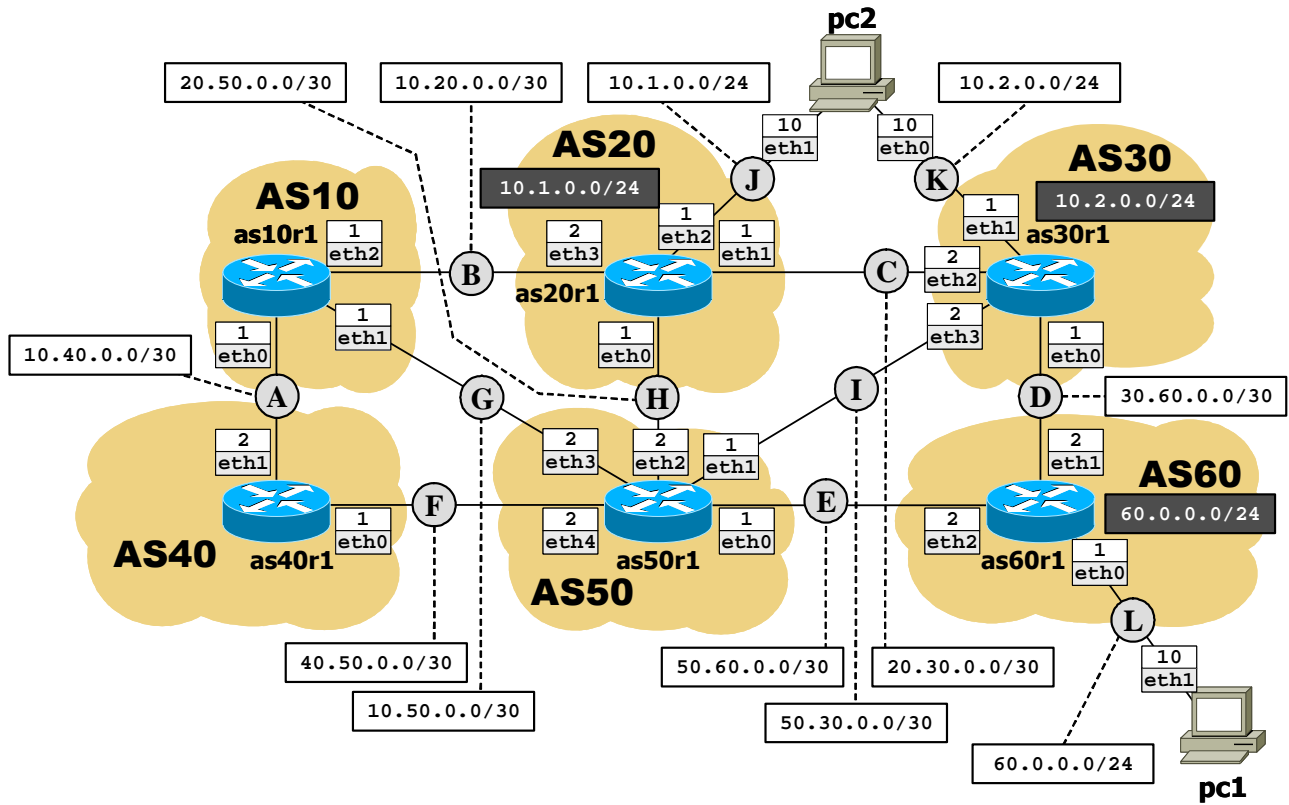


ICN – Examination date: 14-01-2013 – Round 1 – “Barbecue”

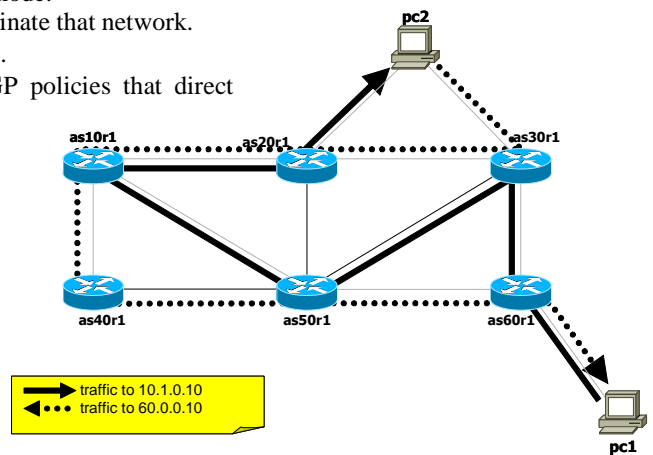


Available time: 100 minutes.

Using Netkit, implement the network depicted in the following figure.



- All the specified IP addresses must be reachable from any network node.
- Autonomous Systems that have a dark grey network associated originate that network.
- Routers do not apply any filters nor announce the default route 0/0.
- By **only setting local-preference**, implement suitable BGP policies that direct traffic flows between **pc1** and **pc2** as indicated in the picture on the right.

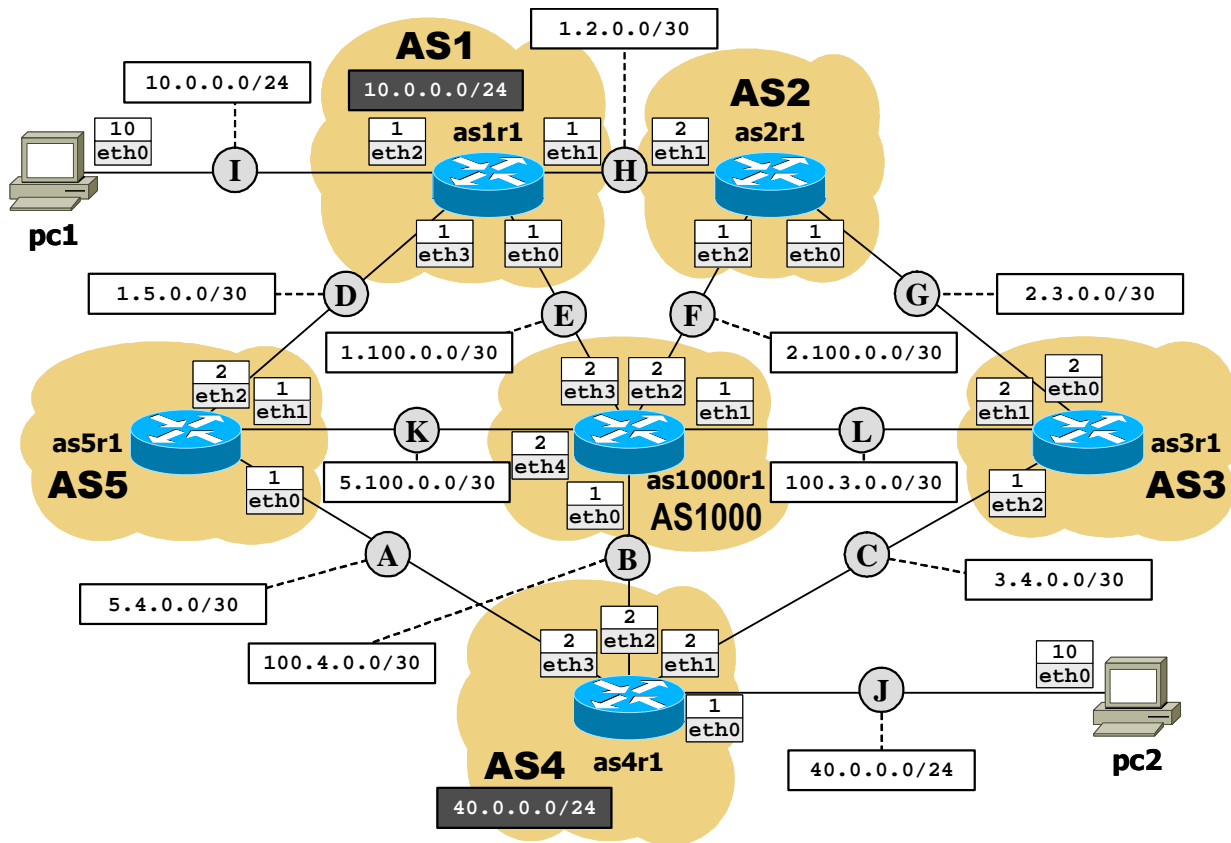


ICN – Examination date: 14-01-2013 – Round 2 – “Spinning top”

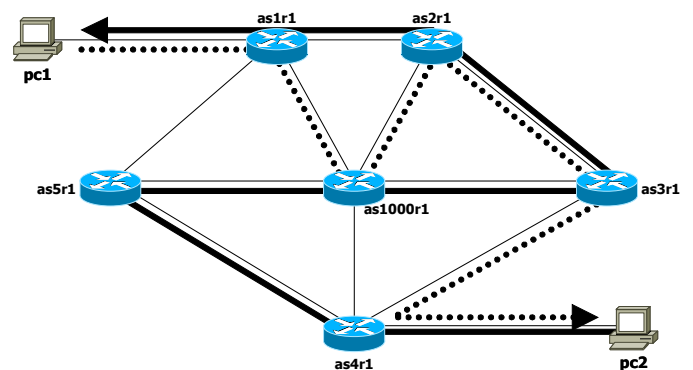


Available time: 100 minutes.

Using Netkit, implement the network depicted in the following figure.



- All the specified IP addresses must be reachable from any network node.
- Autonomous Systems that have a dark grey network associated originate that network.
- Routers do not apply any filters nor announce the default route 0/0.
- By only setting local-preference, implement suitable BGP policies that direct traffic flows between **pc1** and **pc2** as indicated in the picture on the right.

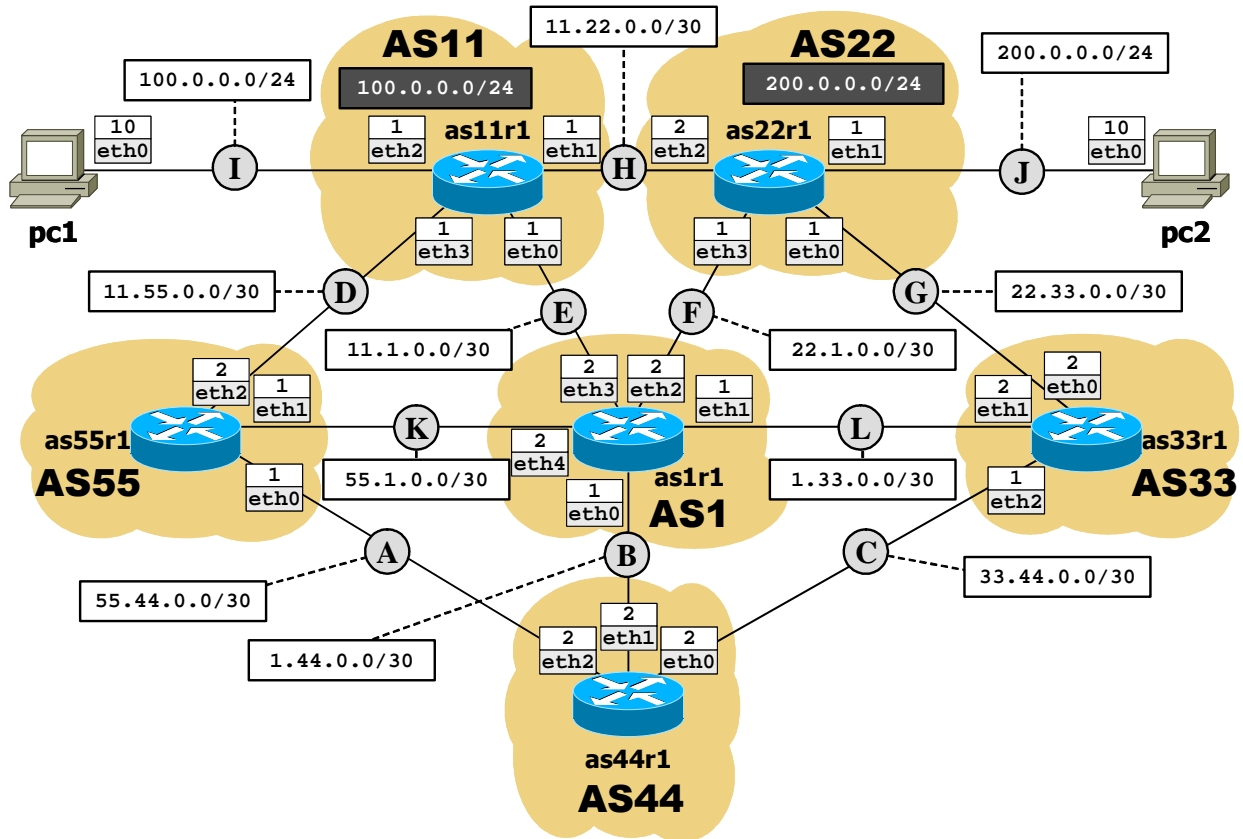


ICN – Examination date: 14-01-2013 – Round 2 – “Diamond”



Available time: 100 minutes.

Using Netkit, implement the network depicted in the following figure.



- All the specified IP addresses must be reachable from any network node.
- Autonomous Systems that have a dark grey network associated originate that network.
- Routers do not apply any filters nor announce the default route 0/0.
- By only setting local-preference, implement suitable BGP policies that direct traffic flows between `pc1` and `pc2` as indicated in the picture on the right.

